

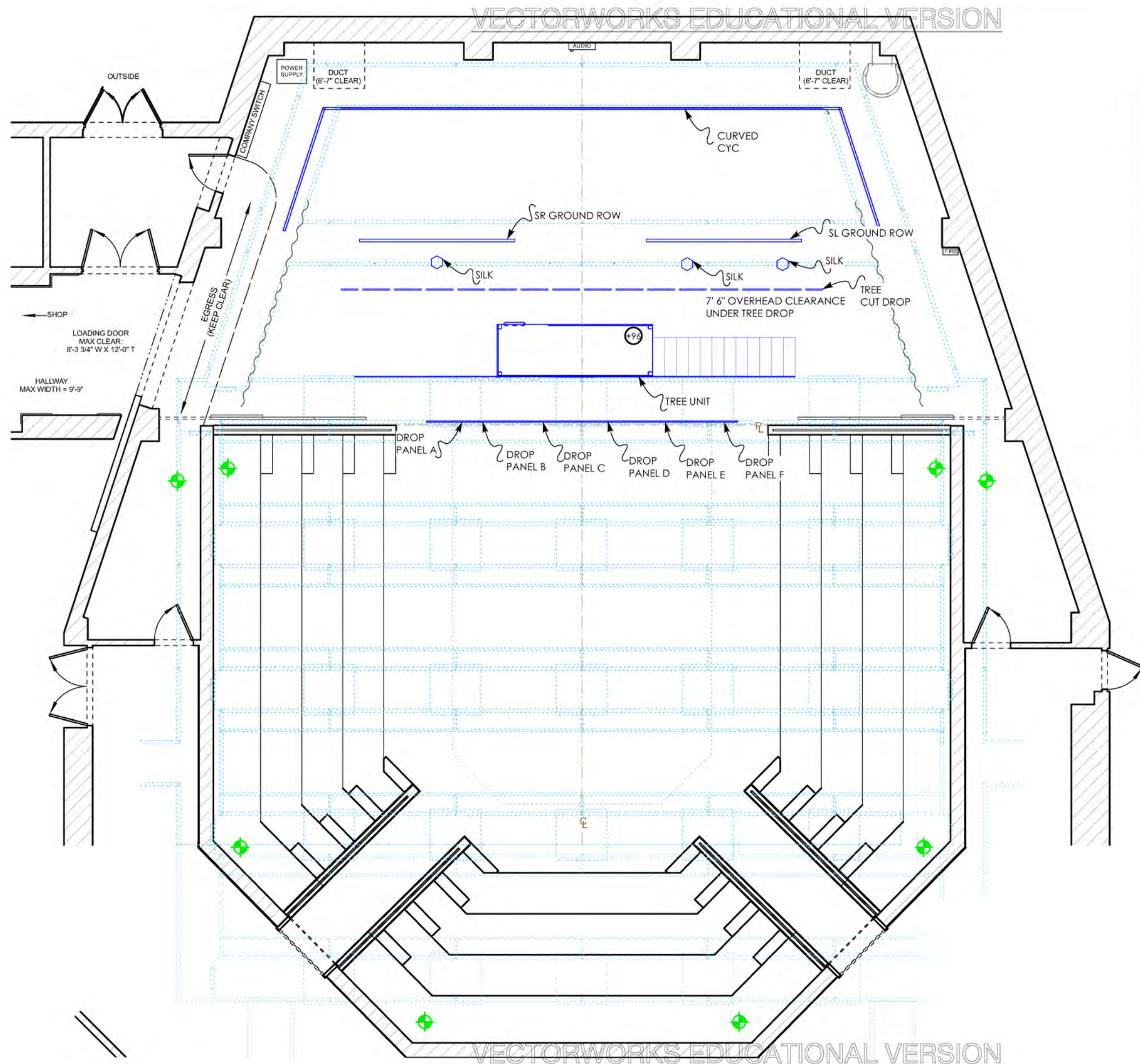
SHEET SCHEDULE:

- 1 - COVER SHEET
- 2 - GROUND PLAN
- 3 - CENTER LINE SECTION
- 4 - SILKS
- 5 - TREE UNIT - PLOT
- 6 - TREE UNIT - FACINGS

- 7 - TREE UNIT - PLATFORM
- 8 - TREE UNIT - RAILINGS
- 9 - TREE UNIT - STAIR RAILING
- 10 - TREE UNIT - LADDER & STAIRS
- 11 - TREE CUT DROP
- 12 - DROP PANELS

- 13 - GROUND ROWS
- 14 - CYC
- 15 - FLOOR PAINT ELEVATION
- 16 - TREE FACING AND DROP ELEV.
- 17 - GROUND ROWS PAINT ELEV.
- 18 - RAILINGS PAINT ELEV.
- 19 - PANELS PAINT ELEV.

SHEET: 1 OF 19	REVISED: 2/2/22		SHEET TITLE: COVER SHEET APPROVED BY:				PRODUCER: CAL. STATE U., FULLERTON	SCENIC DESIGNER: DESTINY MANEWAL	FILE NAME: MIDSUMMER FINALS.vwx
			VENUE: YOUNG THEATRE	DIRECTOR: TOMMY STATLER	DRAWN BY: DESTINY MANEWAL				
			TECHNICAL DIRECTOR: HAROLD KAST	SCALE: 1/8" = 1'-0"	DATE: 11/29/21				



NOTES:

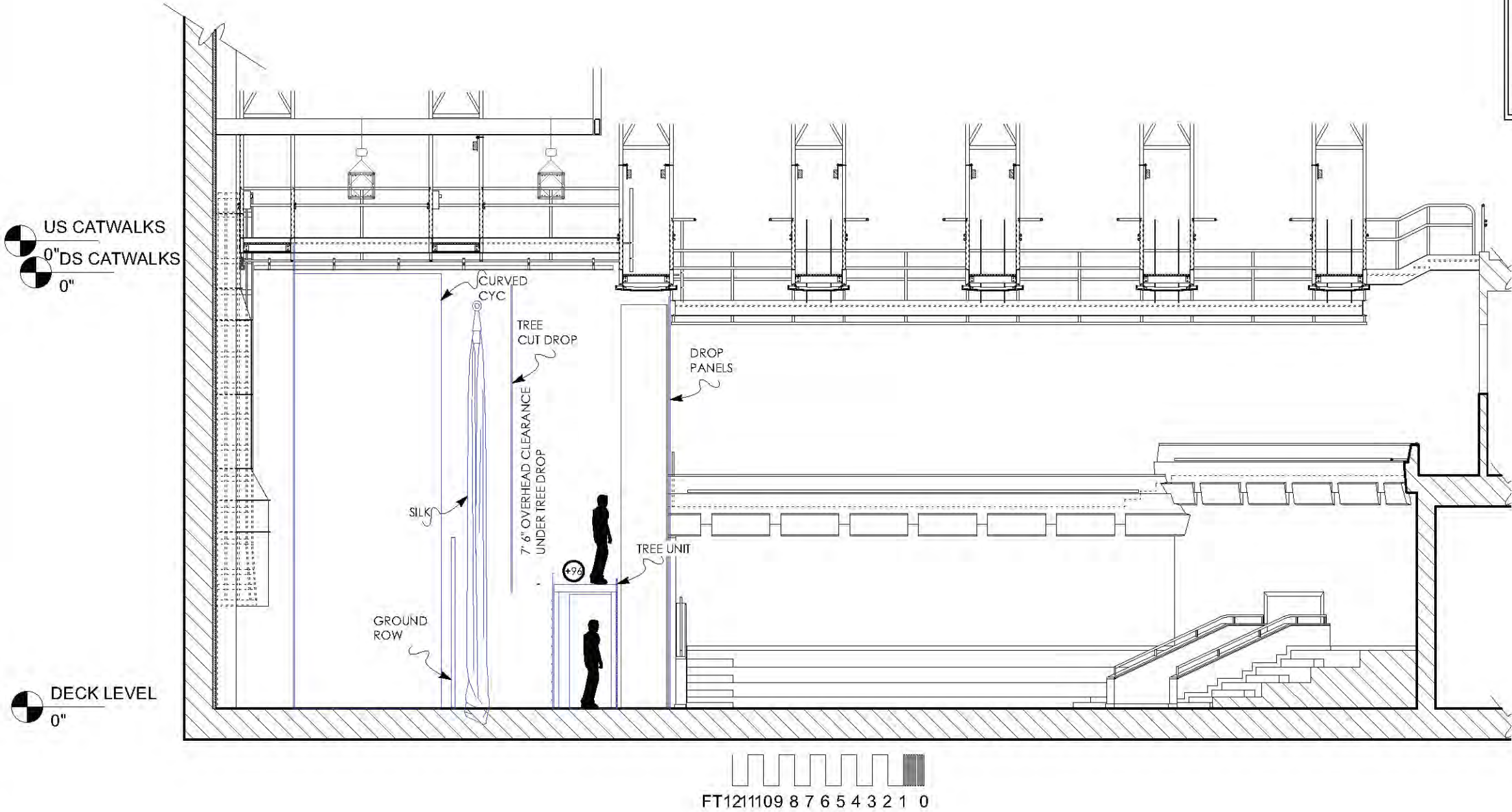
- THREE SILKS DEAD HUNG UPSTAGE; SILKS ARE HUNG STRAIGHT, NOT LOOPED
- SILKS ARE GRAY ONES IN STOCK SIZED FOR HALLBERG
- SIX "DROP" PANELS HUNG NEAR PLASTER LINE; ARE DROPPED AT BEGINNING OF SHOW TO REVEAL UPSTAGE SET; DROPPED BACK IN AT END OF SHOW
- FLOOR PAINT TREATMENT FOREST FLOOR WITH GLOW-IN-THE-DARK PAINTED SPOTS

SHEET:	2	OF 19	REVISED: 2/2/22		SHEET TITLE: GROUND PLAN APPROVED BY:	PRODUCER: CAL. STATE U., FULLERTON	SCENIC DESIGNER: DESTINY MANEVAL	FILE NAME: MIDSUMMER FINALS.wxw
			VENUE: YOUNG THEATRE			DIRECTOR: TOMMY STATLER	DRAWN BY: DESTINY MANEVAL	
			TECHNICAL DIRECTOR: HAROLD KAST			SCALE: 1/8" = 1'-0"	DATE: 11/29/21	

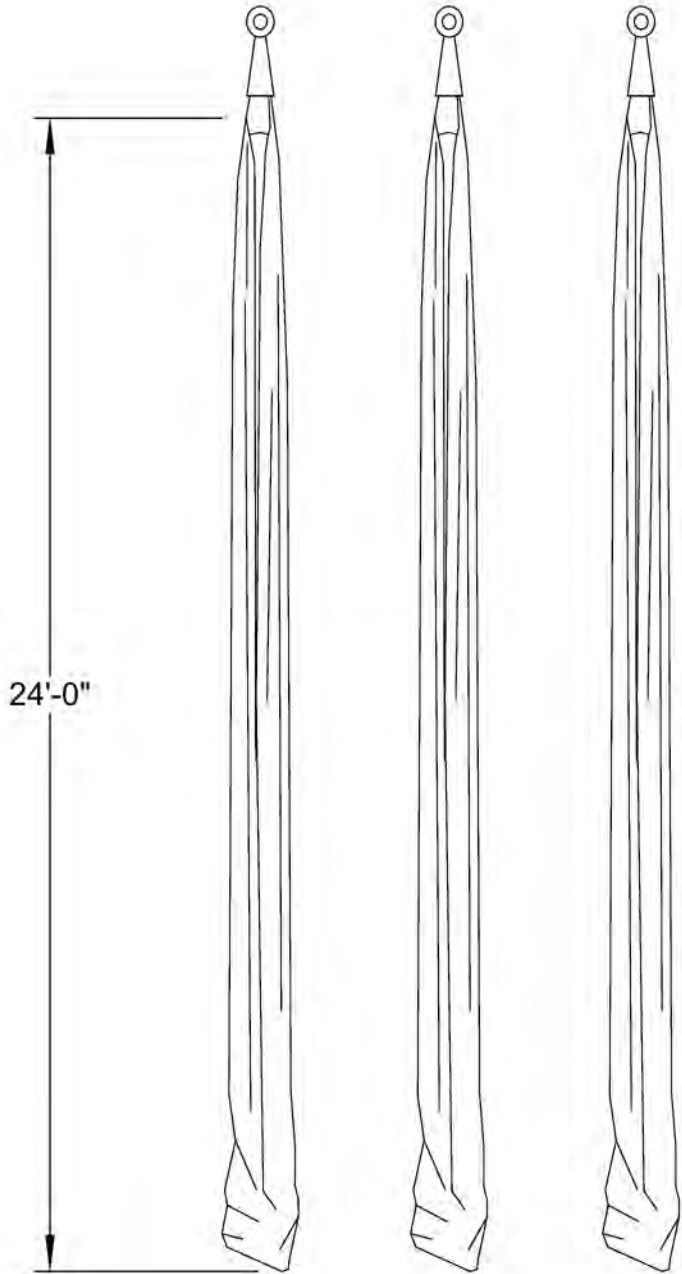
NOTES:

- THREE SILKS DEAD HUNG UPSTAGE; SILKS ARE HUNG STRAIGHT, NOT LOOPED
- SILKS ARE GRAY ONES IN STOCK SIZED FOR HALLBERG
- SIX "DROP" PANELS HUNG NEAR PLASTER LINE; ARE DROPPED AT BEGINNING OF SHOW TO REVEAL UPSTAGE SET; DROPPED BACK IN AT END OF SHOW
- FLOOR PAINT TREATMENT FOREST FLOOR WITH GLOW-IN-THE-DARK PAINTED SPOTS

FILE NAME:	MIDSUMMER FINALS.VWX
SCENIC DESIGNER:	DESTINY MANEVAL
DIRECTOR:	TOMMY STAILER
SCALE:	1/8" = 1'-0"
DRAWN BY:	DESTINY MANEVAL
DATE:	11/29/21



SHEET:	3	OF 19	REVISED:	2/2/22
			A MIDSUMMER NIGHT'S DREAM	
SHEET TITLE:		CENTER LINE SECTION		
APPROVED BY:				
PRODUCER:	CAL STATE U., FULLERTON	SCENIC DESIGNER:	DESTINY MANEVAL	
VENUE:	YOUNG THEATRE	DIRECTOR:	TOMMY STAILER	
TECHNICAL DIRECTOR:	HAROLD KAST	SCALE:	1/8" = 1'-0"	



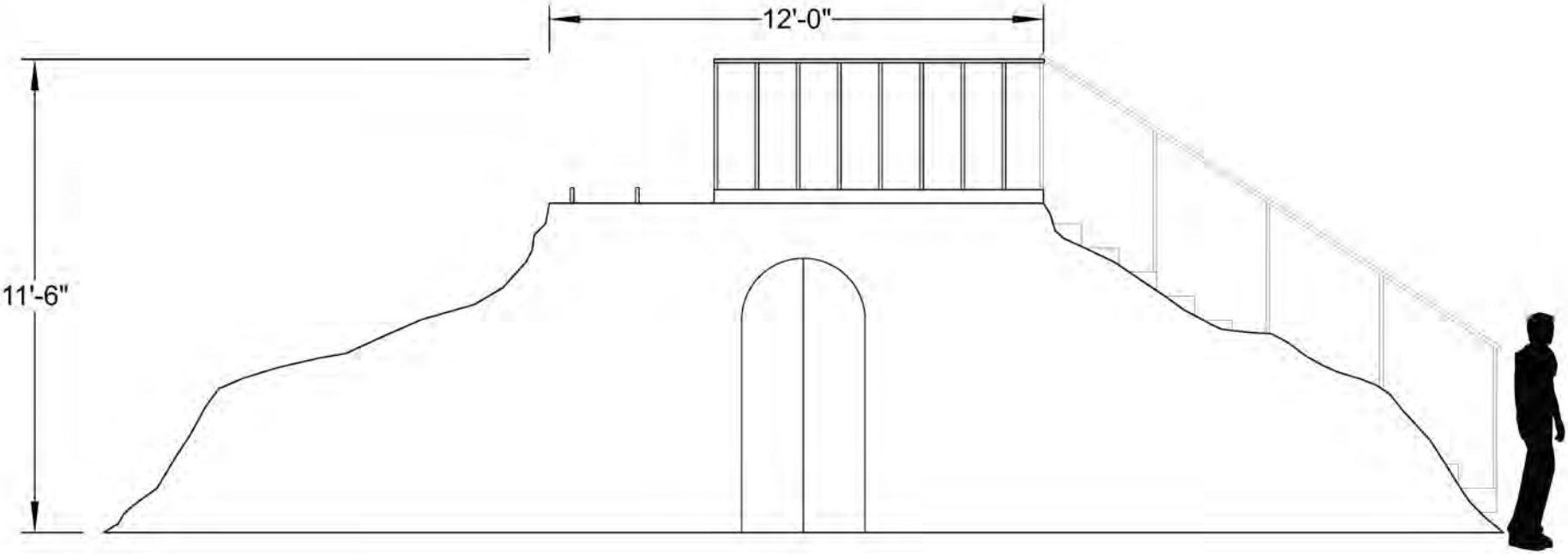
1 SILKS
Scale: 1/4"=1'-0"

- NOTES:**
- THREE SILKS DEAD HUNG UPSTAGE; SILKS ARE HUNG STRAIGHT, NOT LOOPED
 - SILKS ARE GRAY ONES IN STOCK SIZED FOR HALLBERG
 - SILKS ARE APPROX. 24' LONG WHEN HUNG STRAIGHT, NOT LOOPED
 - SILKS USED FOR AESTHETIC PURPOSES ONLY; NO ACTORS WILL PUT THEIR WEIGHT ON THEM

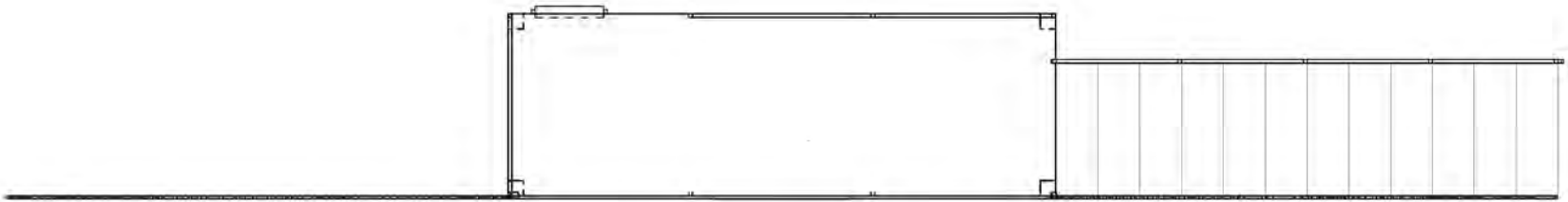
SHEET:	4	REVISED: 2/2/22	 A MIDSUMMER NIGHT'S DREAM	SHEET TITLE: SILKS APPROVED BY:	PRODUCER: CAL. STATE U., FULLERTON	SCENIC DESIGNER: DESTINY MANEWAL	FILE NAME: MIDSUMMER FINALS.VMX
					VENUE: YOUNG THEATRE	DIRECTOR: TOMMY STATLER	DRAWN BY: DESTINY MANEWAL
					TECHNICAL DIRECTOR: HAROLD KAST	SCALE: 1/8" = 1'-0"	DATE: 11/29/21

NOTES:

- DOORWAY IS COVERED WITH MUSLIN TO HIDE ENTRANCE; PAINTED TO MATCH REST OF UNIT
- DOORWAY PANELS SHOULD BE ABLE TO REMAIN CLOSED, EASILY OPENED WHEN ACTOR NEEDS TO WALK THROUGH THEM; ONLY PERMANENTLY ATTACHED ON STRAIGHT SECTIONS OF LEFT AND RIGHT SIDES
- PLATFORM ABOVE ENTRY WAY
- LADDER ON UPSTAGE, STAGE RIGHT SIDE AND STAIR UNIT ON STAGE LEFT; UNITS CAN BE FROM STOCK, OR DESIGN ADJUSTED PER TD RECCOMENDATION
- RAILINGS ON THREE SIDES OF PLATFORM
- LEGS AND STRUCTURAL SUPPORT WHERE NEEDED, WITHOUT BLOCKING ENTRY THROUGH DOORWAY
- LED LIGHT STRIPS WILL BE ADDED JUST INSIDE DOORWAY FOR "GLOWING" EFFECT
- DUVE COVERING UPSTAGE SIDE OF PLATFORM WITH ENTRYWAY BETWEEN
- PAINT TREATMENT TO LOOK LIKE TREE BARK; LINES UP WITH TREE CUT DROP BEHIND IT

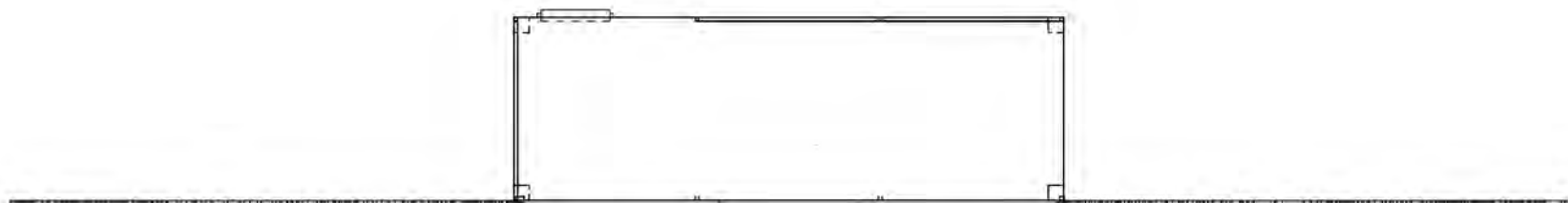
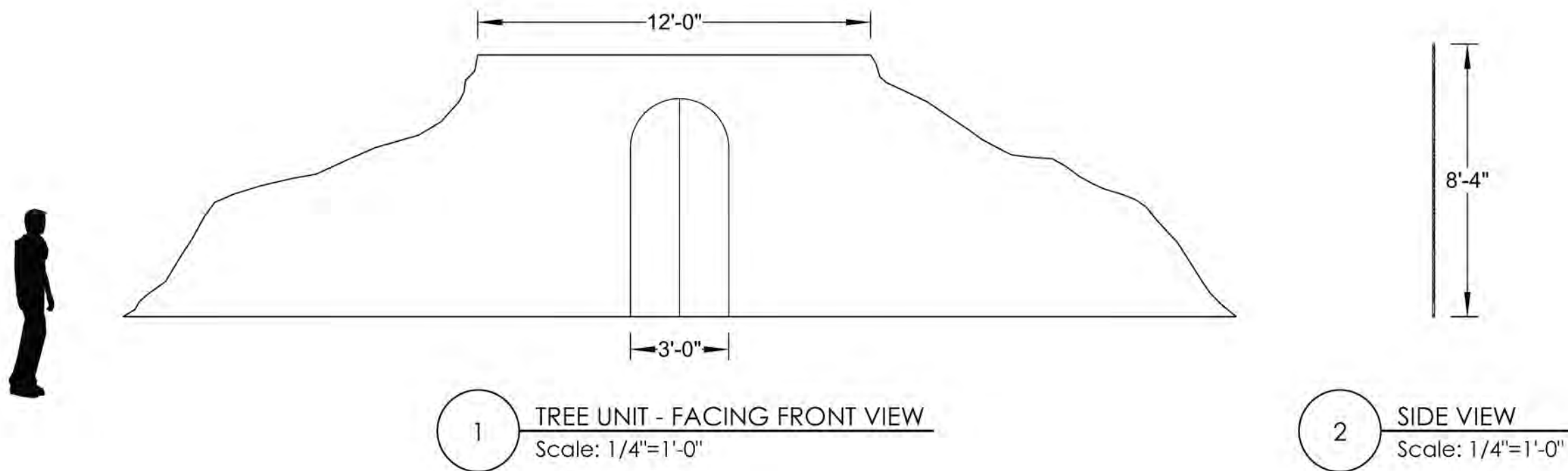


1 TREE UNIT - FRONT VIEW
Scale: 1/4"=1'-0"



2 TREE UNIT - TOP VIEW
Scale: 1/4"=1'-0"

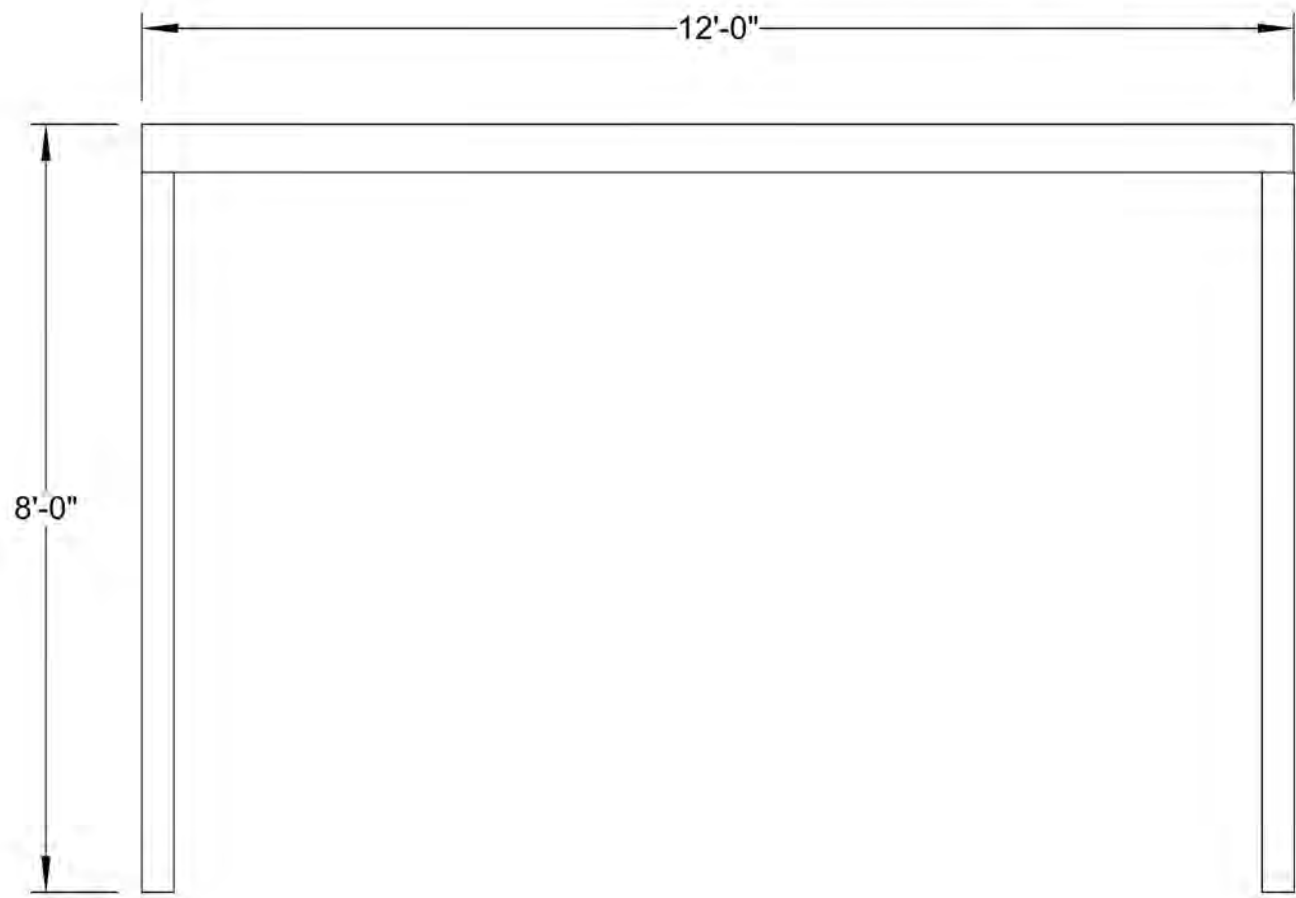
SHEET:	5	OF 19
REVISID: 2/2/22		
SHEET TITLE: TREE UNIT PLOT APPROVED BY:		
PRODUCER: CAL. STATE U., FULLERTON	SCENIC DESIGNER: DESTINY MANEWAL	FILE NAME: MIDSUMMER FINALS.VMX
VENUE: YOUNG THEATRE	DIRECTOR: TOMMY STATLER	DRAWN BY: DESTINY MANEWAL
TECHNICAL DIRECTOR: HAROLD KAST	SCALE: 1/8" = 1'-0"	DATE: 11/29/21



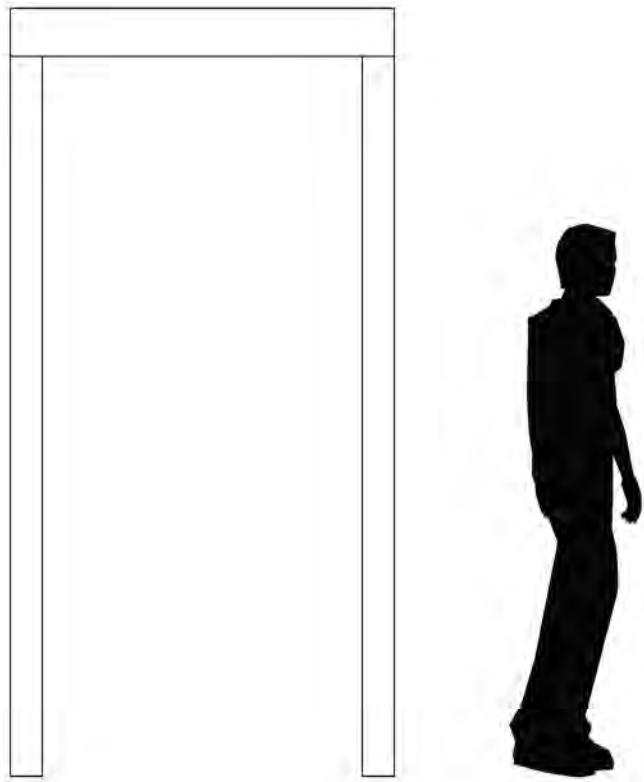
NOTES:

- DOORWAY IS COVERED WITH MUSLIN TO HIDE ENTRANCE; PAINTED TO MATCH REST OF UNIT
- DOORWAY PANELS SHOULD BE ABLE TO REMAIN CLOSED WHEN NOT IN USE; HELD OPEN BY ACTORS WHEN WALKING THROUGH
- FACING MADE USING 3/4" PLYWOOD
- PAINT TREATMENT TO LOOK LIKE TREE BARK; LINES UP WITH TREE CUT DROP BEHIND IT
- LED LIGHT STRIPS UNDER PLATFORM JUST INSIDE DOORWAY

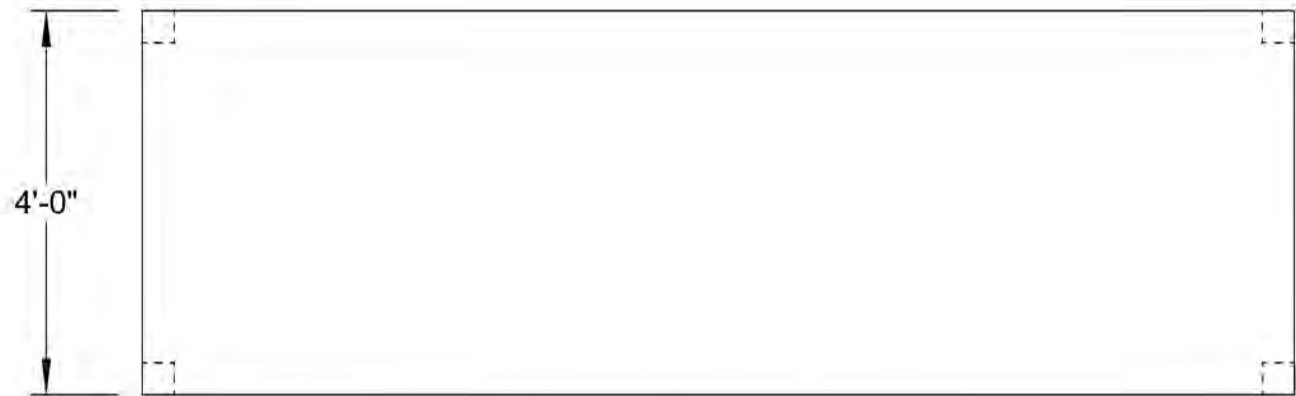
SHEET:	6	OF 19	REVISED: 2/2/22		SHEET TITLE: TREE UNIT - FACING APPROVED BY:	PRODUCER: CAL STATE U., FULLERTON	SCENIC DESIGNER: DESTINY MANEVAL	FILE NAME: MIDSUMMER FINALS.VMX
						VENUE: YOUNG THEATRE	DIRECTOR: TOMMY STATLER	DRAWN BY: DESTINY MANEVAL
						TECHNICAL DIRECTOR: HAROLD KAST	SCALE: 1/8" = 1'-0"	DATE: 11/29/21



1 PLATFORM - FRONT VIEW
Scale: 1/2"=1'-0"



2 PLATFORM - SIDE VIEW
Scale: 1/2"=1'-0"

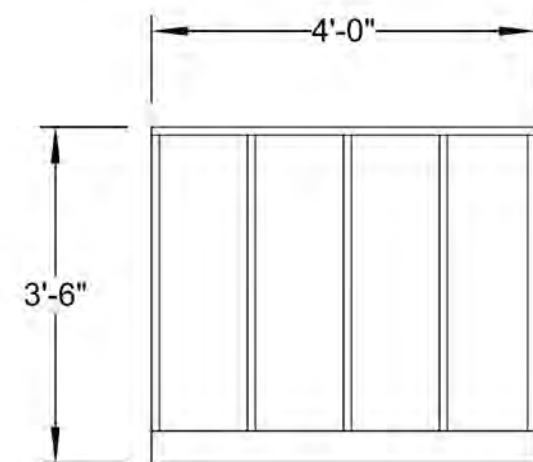


3 PLATFORM - TOP VIEW
Scale: 1/2"=1'-0"

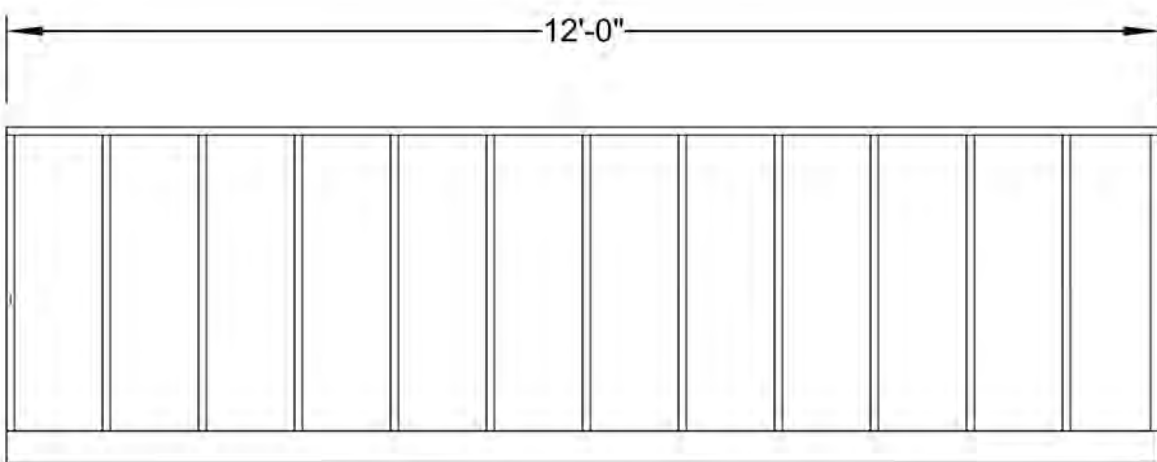
NOTES:

- LEGS AND STRUCTURAL SUPPORT WHERE NEEDED, WITHOUT BLOCKING ENTRY THROUGH DOORWAY
- LADDER ON UPSTAGE, STAGE RIGHT SIDE AND STAIR UNIT ON STAGE LEFT; UNITS CAN BE FROM STOCK, OR DESIGN ADJUSTED PER TD RECOMMENDATION
- RAILINGS ON THREE SIDES OF PLATFORM (SR, US, & DS)
- LED LIGHT STRIPS WILL BE ADDED JUST INSIDE DOORWAY FOR "GLOWING" EFFECT
- DUVE COVERING UPSTAGE SIDE OF PLATFORM WITH ENTRYWAY BETWEEN

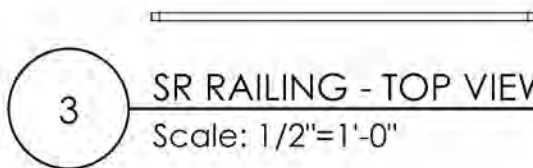
SHEET: 7 OF 19	REVISED: 2/2/22	 A MIDSUMMER NIGHT'S DREAM	SHEET TITLE: TREE UNIT - PLATFORM	PRODUCER: CAL. STATE U., FULLERTON	SCENIC DESIGNER: DESTINY MANEWAL	FILE NAME: MIDSUMMER FINALS.VMX
APPROVED BY:			VENUE: YOUNG THEATRE	DIRECTOR: TOMMY STATLER	DRAWN BY: DESTINY MANEWAL	
			TECHNICAL DIRECTOR: HAROLD KAST	SCALE: 1/8" = 1'-0"	DATE: 11/29/21	



1 SR RAILING - FRONT VIEW
Scale: 1/2"=1'-0"



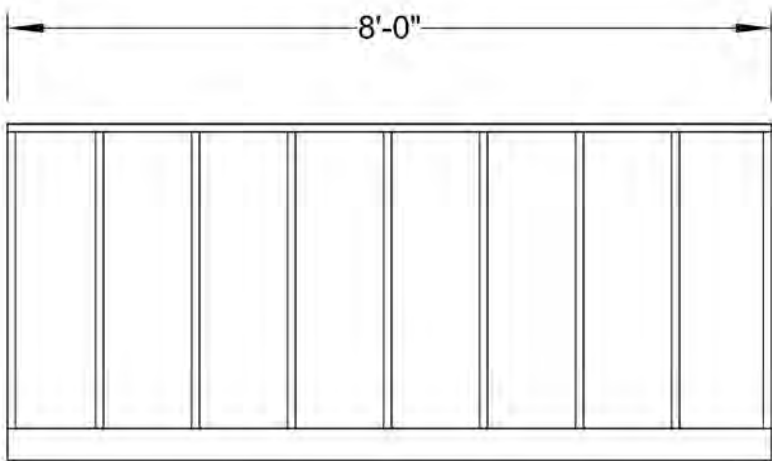
2 DS RAILING - FRONT VIEW
Scale: 1/2"=1'-0"



3 SR RAILING - TOP VIEW
Scale: 1/2"=1'-0"



4 DS RAILING - TOP VIEW
Scale: 1/2"=1'-0"



5 US RAILING - FRONT VIEW
Scale: 1/2"=1'-0"



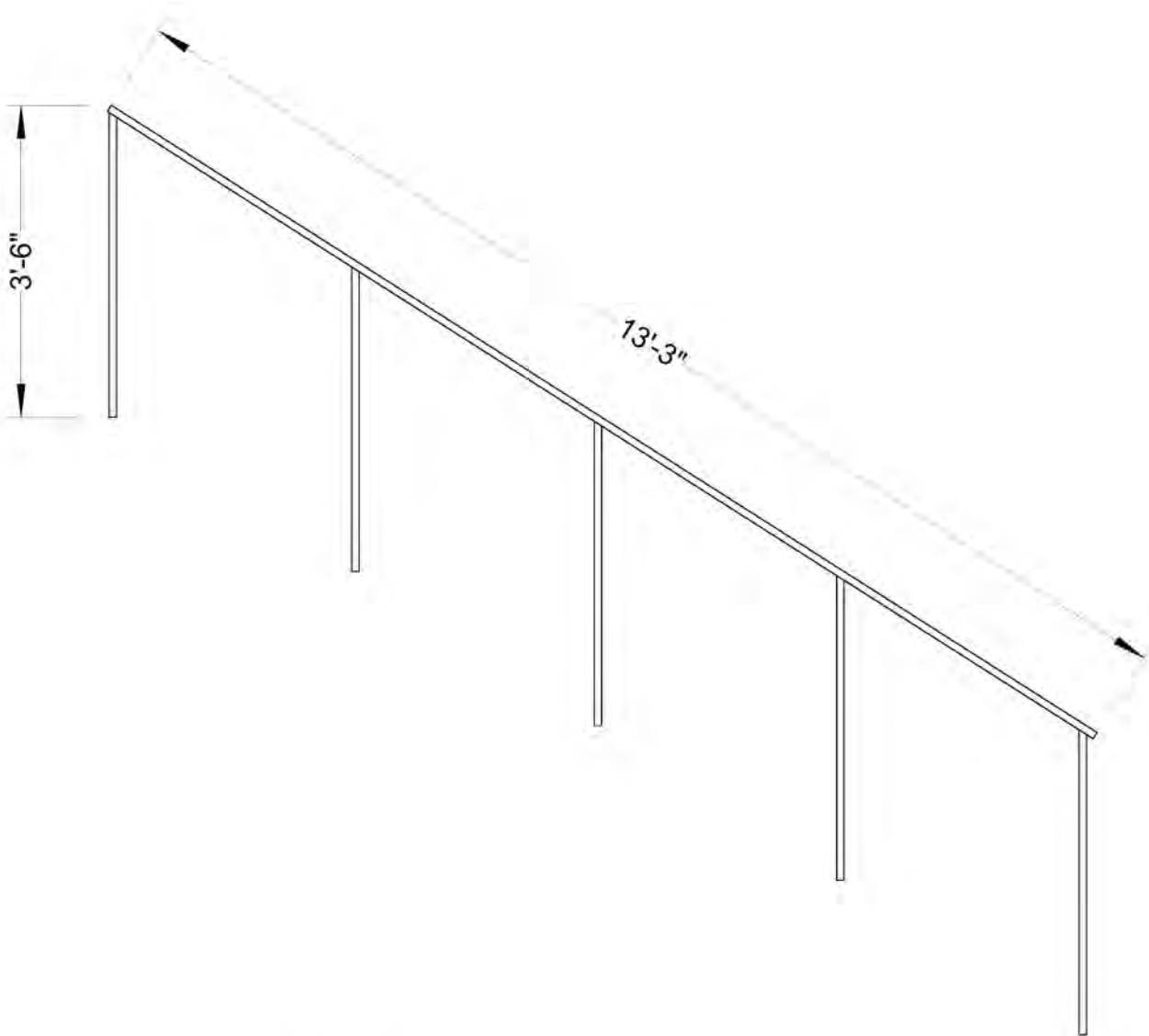
6 RAILING - SIDE VIEW
Scale: 1/2"=1'-0"



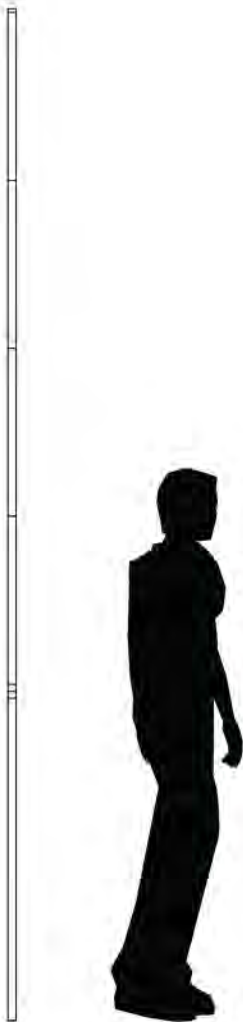
7 US RAILING - TOP VIEW
Scale: 1/2"=1'-0"

- NOTES:**
- SUGGESTED MATERIAL: 1" BOX TUBE
 - KICKPLATE MATERIAL THICKNESS AS NEEDED
 - PAINT TREATMENT TO MATCH WITH TREE UNIT FACING

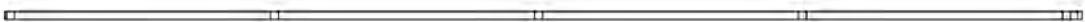
FILE NAME: MIDSUMMER FINALS.VMX	SCENIC DESIGNER: DESTINY MANEWAL	PRODUCER: CAL STATE U., FULLERTON	SHEET TITLE: TREE UNIT - RAILINGS APPROVED BY:	A MIDSUMMER NIGHT'S DREAM	REVISED: 2/2/22	SHEET: 8 OF 19
DRAWN BY: DESTINY MANEWAL	DIRECTOR: TOMMY STATLER	VENUE: YOUNG THEATRE				
DATE: 11/29/21	SCALE: 1/8" = 1'-0"	TECHNICAL DIRECTOR: HAROLD KAST				



1 STAIR RAILING - FRONT VIEW
Scale: 1/2"=1'-0"



2 STAIR RAILING - SIDE VIEW
Scale: 1/2"=1'-0"

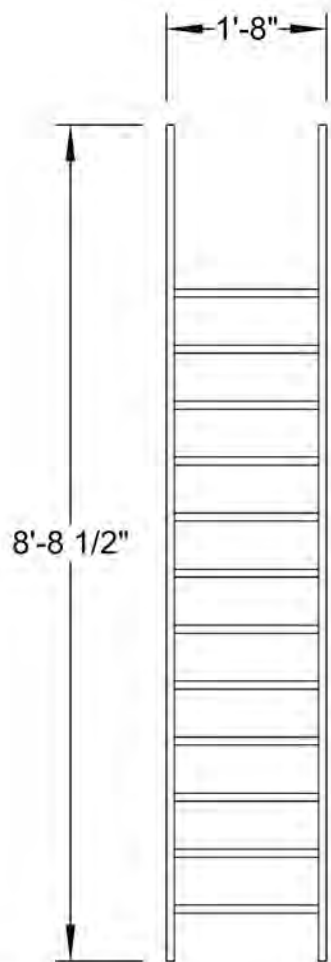


3 STAIR RAILING - TOP VIEW
Scale: 1/2"=1'-0"

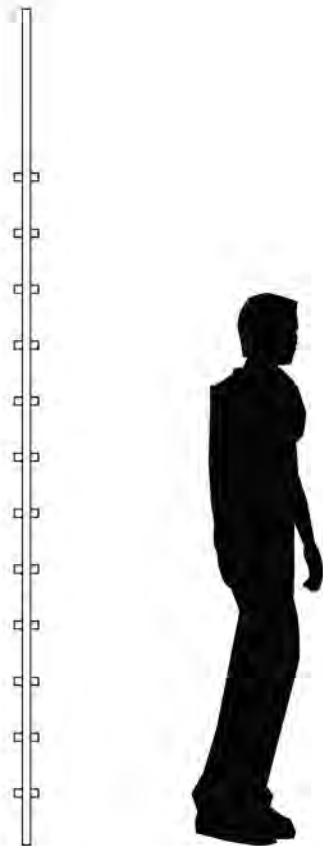
NOTES:

- SUGGESTED MATERIAL: 1" BOX TUBE
- KICKPLATE MATERIAL THICKNESS AS NEEDED
- PAINT TREATMENT TO MATCH WITH TREE UNIT FACING

SHEET:	9	OF 19	REVISED: 2/2/22	 MIDSUMMER NIGHT'S DREAM	SHEET TITLE: TREE UNIT - STAIR RAILING APPROVED BY:	PRODUCER: CAL STATE U., FULLERTON	SCENIC DESIGNER: DESTINY MANEVAL	FILE NAME: MIDSUMMER FINALS.VMX
						VENUE: YOUNG THEATRE	DIRECTOR: TOMMY STATLER	DRAWN BY: DESTINY MANEVAL
						TECHNICAL DIRECTOR: HAROLD KAST	SCALE: 1/8" = 1'-0"	DATE: 11/29/21



1 LADDER - FRONT VIEW
Scale: 1/2"=1'-0"

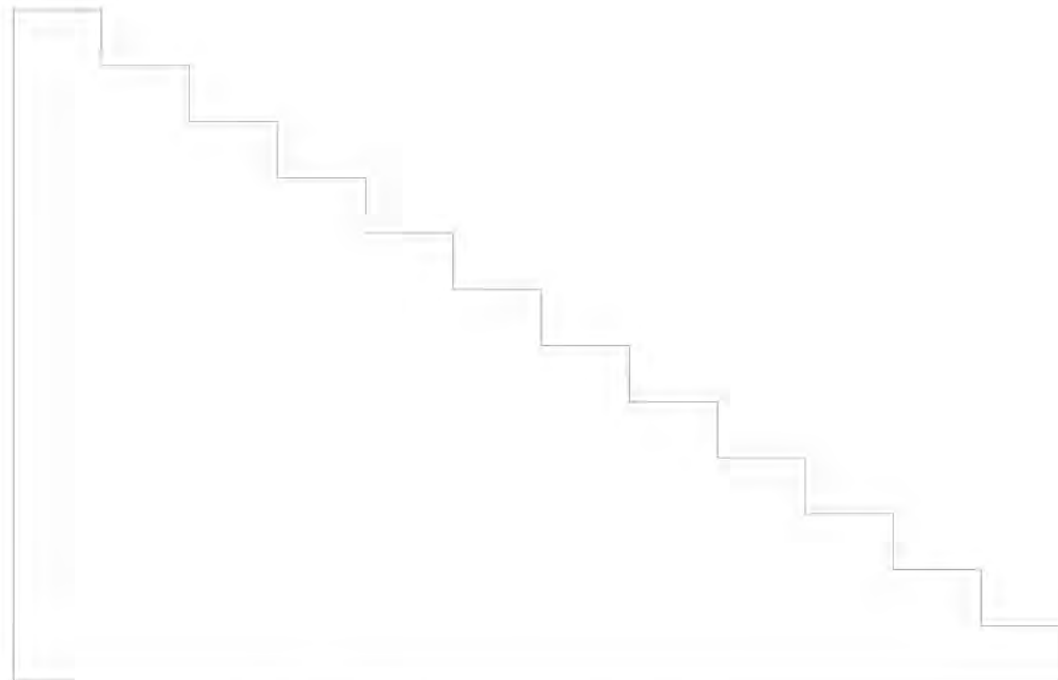


2 LADDER - SIDE VIEW
Scale: 1/2"=1'-0"

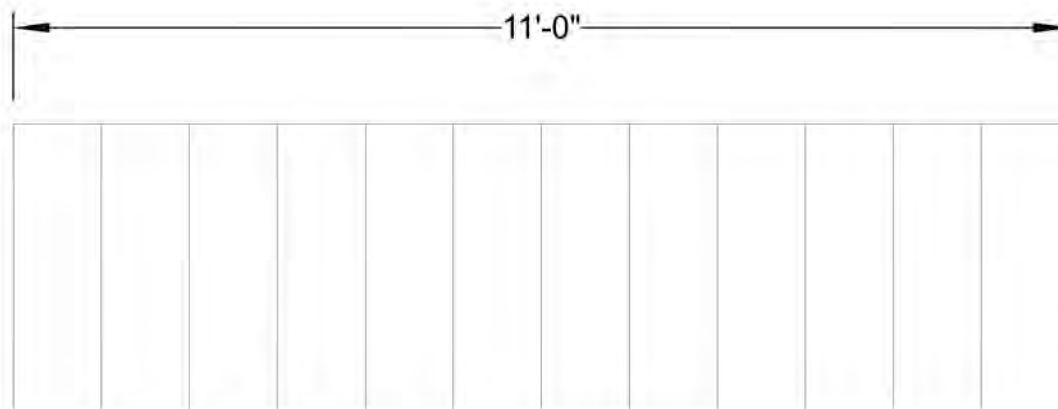


3 LADDER - TOP VIEW
Scale: 1/2"=1'-0"

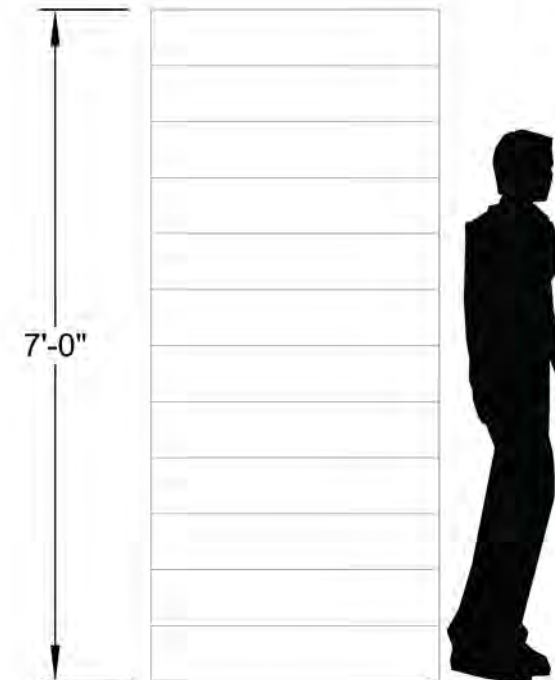
- NOTES:**
- LADDER SPECIFICATIONS CAN CHANGE PER TD RECOMMENDATION, OR CAN COME FROM STOCK
 - WILL NOT BE SEEN
 - LOCATED ON UPSTAGE SIDE OF PLATFORM FOR ACTOR ACCESS



1 STAIRS - FRONT VIEW
Scale: 1/2"=1'-0"



3 STAIRS - TOP VIEW
Scale: 1/2"=1'-0"



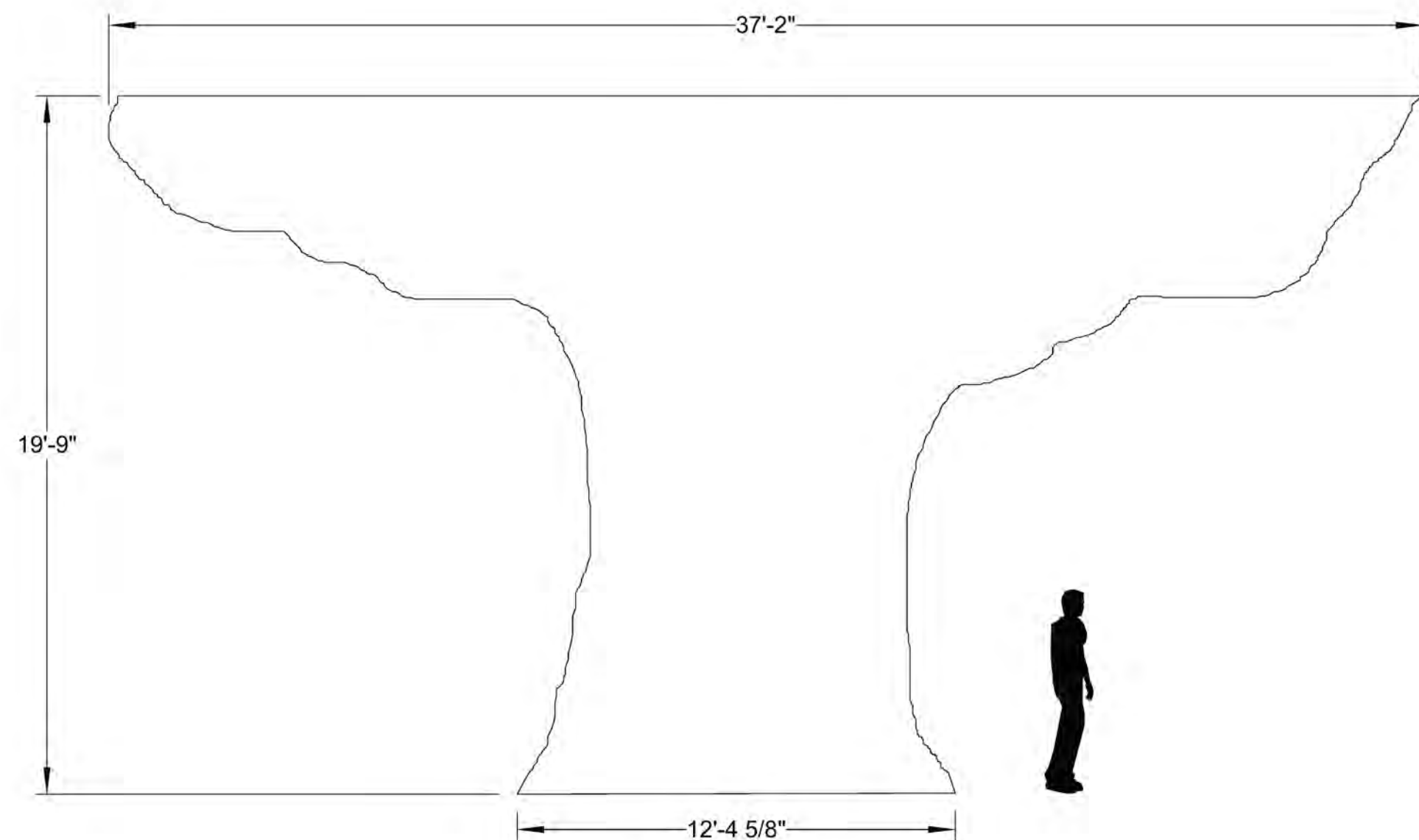
2 STAIRS - SIDE VIEW
Scale: 1/2"=1'-0"

- NOTES:**
- STAIRS FROM STOCK
 - AS LITTLE AMOUNT OF STAIRS SEEN AS POSSIBLE
 - RAILING ON UPSTAGE SIDE
 - LOCATED ON STAGE LEFT SIDE OF PLATFORM, IDEALLY FOLLOWS NEAR EDGE OF TREE UNIT FACING TO ALLOW ACTORS TO APPEAR THAT THEY ARE "CLIMBING" THE TREE ROOTS
 - PLATFORM AT BOTTOM?

SHEET: 10 OF 19	REVISED: 2/2/22	 <p>A MIDSUMMER NIGHT'S DREAM</p>	SHEET TITLE: TREE UNIT - LADDER & STAIRS	PRODUCER: CAL. STATE U., FULLERTON	SCENIC DESIGNER: DESTINY MANEWAL	FILE NAME: MIDSUMMER FINALS.VMX
			VENUE: YOUNG THEATRE	DIRECTOR: TOMMY STATLER	DRAWN BY: DESTINY MANEWAL	
			TECHNICAL DIRECTOR: HAROLD KAST	SCALE: 1/8" = 1'-0"	DATE: 11/29/21	

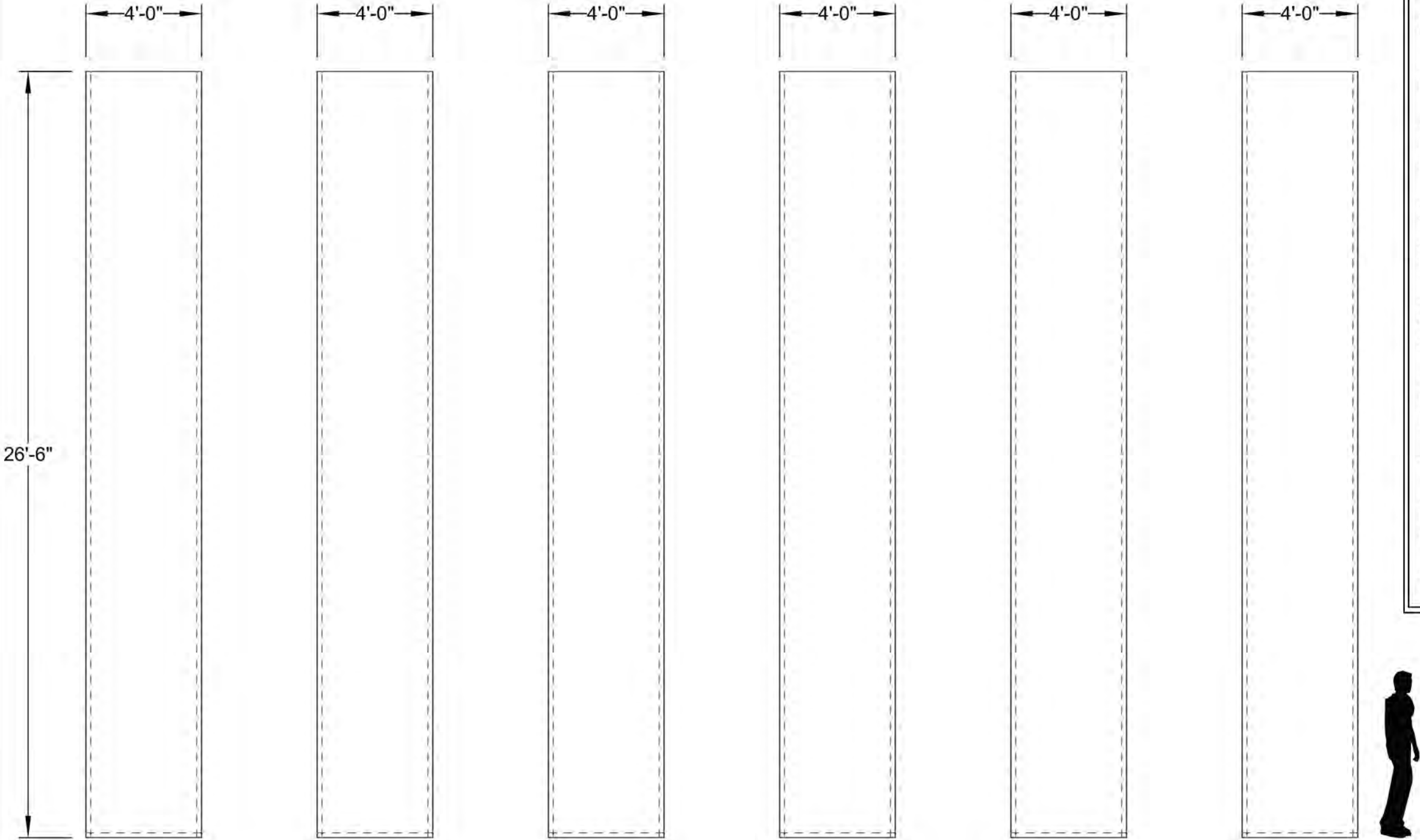
NOTES:

- MUSLIN DROP HUNG UPSTAGE OF TREE UNIT WITH ENOUGH SPACE FOR ACTOR TO CLIMB LADDER ONTO PLATFORM OF TREE UNIT
- THREE PIECES OF MEDIUM WEIGHT MUSLIN SEWN TOGETHER OR ARRANGED AS RECCOMENDED BY COSTUME SHOP MANAGER
- LINES UP WITH TREE UNIT TO "CONTINUE" TREE UPWARDS
- 7' 6" OVERHEAD SPACE UNDER DROP
- DROP MADE IN-HOUSE; MUSLIN FROM STOCK; JUTE WEBBING RECYCLED FROM OLD DROP (CURRENTLY LOCATED IN PAINT LAB); OPERA NETTING WHERE NEEDED
- DROP MADE IN-HOUSE; MUSLIN FROM STOCK; JUTE WEBBING RECYCLED FROM OLD DROP (CURRENTLY LOCATED IN PAINT LAB); OPERA NETTING WHERE NEEDED
- 2" SEAM ALLOANCE OR AS RECCOMENDED BY COSTUME SHOP MANAGER



1 CUT DROP
Scale: 1/4"=1'-0"

SHEET: 11 OF 19	REVISED: 2/2/22	 A MIDSUMMER NIGHT'S DREAM	SHEET TITLE: TREE CUT DROP APPROVED BY:		PRODUCER: CAL STATE U., FULLERTON	SCENIC DESIGNER: DESTINY MANEWAL	FILE NAME: MIDSUMMER FINALS.VWX
			VENUE: YOUNG THEATRE		DIRECTOR: TOMMY STATLER	DRAWN BY: DESTINY MANEWAL	
			TECHNICAL DIRECTOR: HAROLD KAST		SCALE: 1/8" = 1'-0"	DATE: 11/29/21	



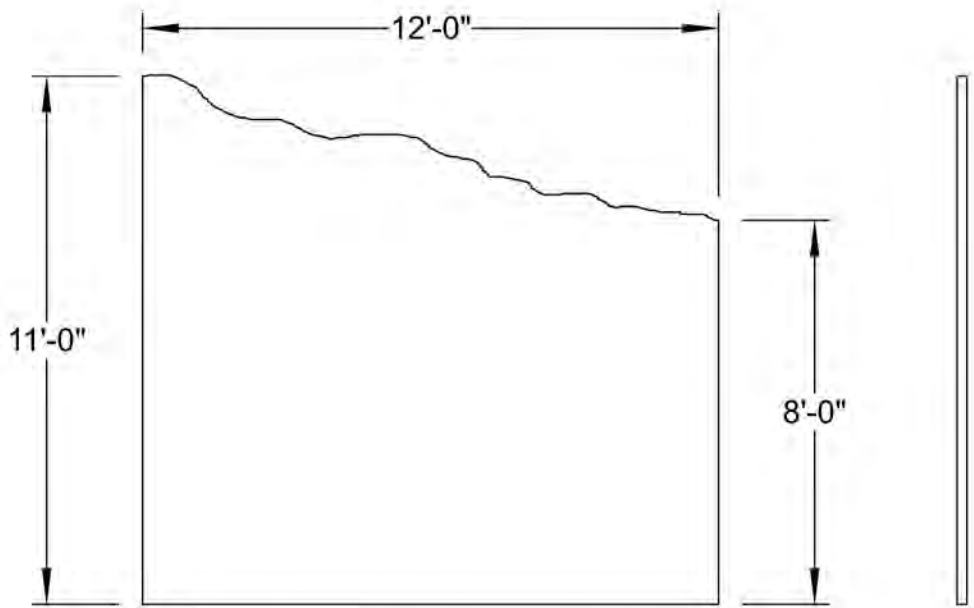
1 DROP A Scale: 1/4"=1'-0" 2 DROP B Scale: 1/4"=1'-0" 3 DROP C Scale: 1/4"=1'-0" 4 DROP D Scale: 1/4"=1'-0" 5 DROP E Scale: 1/4"=1'-0" 6 DROP F Scale: 1/4"=1'-0"

- NOTES:**
- SIX MEDIUM WEIGHT NATURAL MUSLIN PANELS
 - PANELS HANG DOWNSTAGE OF TREE UNIT TO HIDE FOREST LOCATION, ALONG PLASTER LINE
 - PANELS ARE DROPPED TO GROUND TO TRANSITION INTO FOREST LOCATION (PG. 5 OF SCRIPT); IDEALLY, WILL LOOK LIKE THE FAERIES ARE PULLING THEM DOWN
 - PANELS DROPPED BACK INTO ORIGINAL PLACE AT END OF SHOW (PG. 34 OF SCRIPT)
 - 2" HEMS ON ALL EDGES, OR AS RECOMMENDED BY COSTUME SHOP MANAGER
 - NO JUTE WEBBING ACROSS TOP
 - PANELS DROPPED USING MECHANISM DETERMINED BY TD; STRING/CORD SEWN INTO POCKET ACROSS TOP POTENTIALLY
 - PANELS PAINTED TO LOOK LIKE A STERILE BUILDING

SHEET: 12 OF 19	REVISED: 2/2/22			SHEET TITLE: DROP PANELS APPROVED BY:	PRODUCER: CAL STATE U., FULLERTON VENUE: YOUNG THEATRE TECHNICAL DIRECTOR: HAROLD KAST	SCENIC DESIGNER: DESTINY MANEVAL	FILE NAME: MIDSUMMER FINALS.VWX
	DIRECTOR: TOMMY STATLER	DRAWN BY: DESTINY MANEVAL	DATE: 11/29/21				

NOTES:

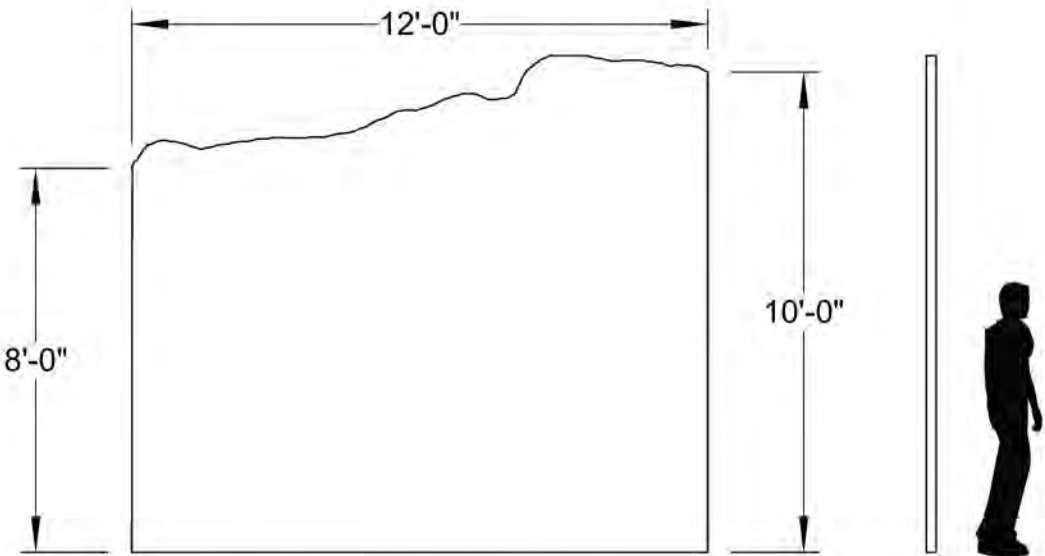
- TWO TALL GROUND ROW UNITS UPSTAGE OF TREE DROP
- UNIT THICKNESS CAN CHANGE PER TD RECOMMENDATION
- PAINT TREATMENT OF LANDSCAPE AND TREES IN DISTANCE
- TALL HEIGHT IS TO ALLOW ACTOR DIRECT ENTRANCE/EXIT FROM TREE UNIT



1 SR GROUND ROW - FRONT VIEW
Scale: 1/4"=1'-0"

2 SR GR - SIDE VIEW
Scale: 1/4"=1'-0"

3 SR GROUND ROW - TOP VIEW
Scale: 1/4"=1'-0"

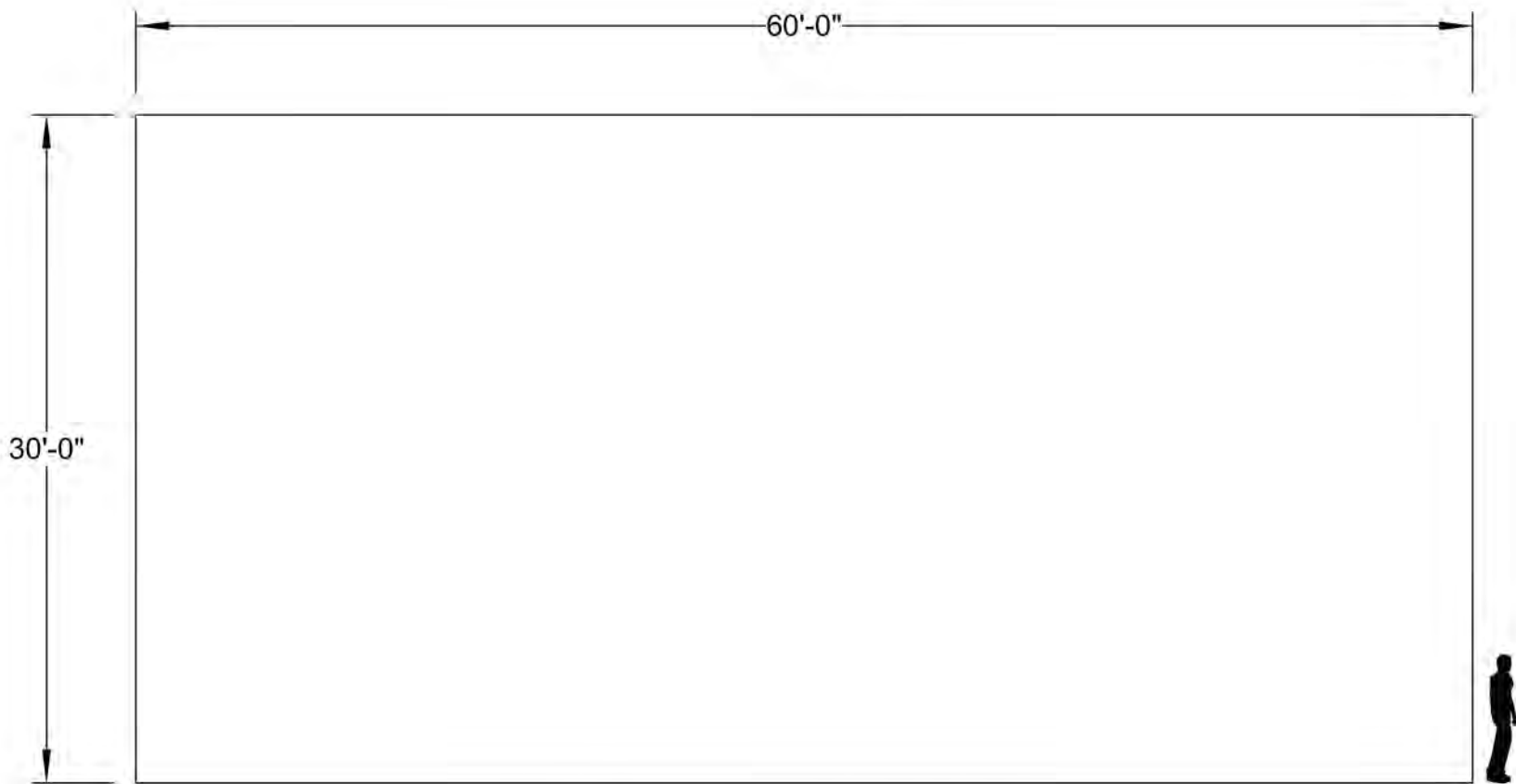


4 SL GROUND ROW - FRONT VIEW
Scale: 1/4"=1'-0"

5 SL GR - SIDE VIEW
Scale: 1/4"=1'-0"

6 SL GROUND ROW - TOP VIEW
Scale: 1/4"=1'-0"

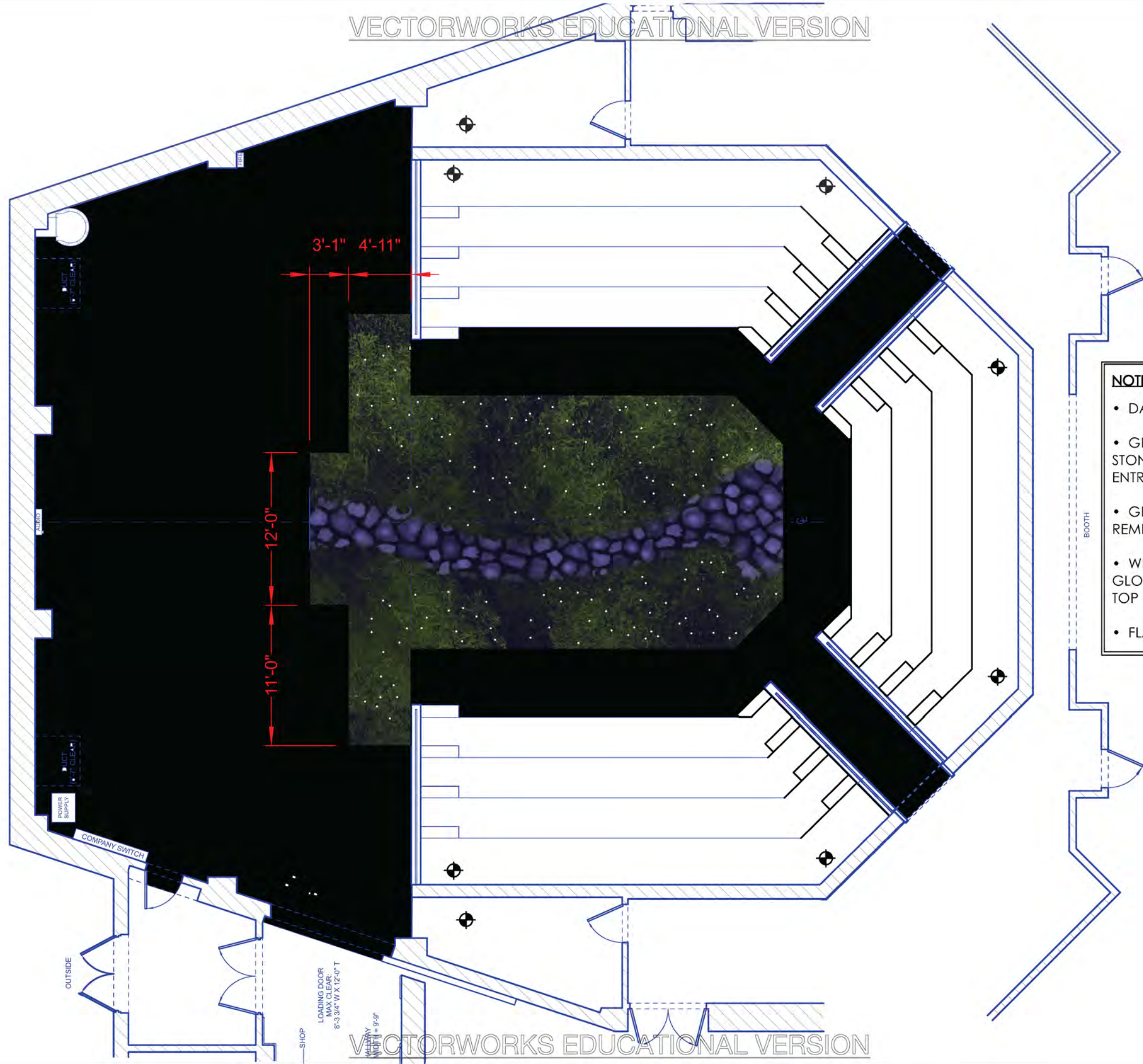
FILE NAME: MIDSUMMER FINALS.VMX	SCENIC DESIGNER: DESTINY MANEWAL	PRODUCER: CAL STATE U., FULLERTON	SHEET TITLE: GROUND ROWS APPROVED BY:	A MIDSUMMER NIGHT'S DREAM	REVISED: 2/2/22	SHEET: 13 OF 19
DRAWN BY: DESTINY MANEWAL	DIRECTOR: TOMMY STATLER	VENUE: YOUNG THEATRE				
DATE: 11/29/21	SCALE: 1/8" = 1'-0"	TECHNICAL DIRECTOR: HAROLD KAST				



1 CURVED CYC - FLAT
Scale: 1/8"=1'-0"

- NOTES:**
- CURVED CYCLORAMA FROM STOCK
 - MASKING IN FRONT OF CYC APPROX. 2'-9" ON BOTH SL AND SR SIDES
 - BORDER MASKING ACROSS TOP OF CYC TO HIDE HARDWARE
 - AT LEAST 7' OF SPACE ALLOWANCE IN FRONT OF CYC FOR LIGHTING INSTRUMENTS
 - HUNG ON DS SIDE OF CATWALK 7; CURVED AS NEEDED WITH STOCK TRUSS

SHEET: 14 OF 19	REVISED: 2/2/22	 SHEET TITLE: CURVED CYC APPROVED BY:	PRODUCER: CAL. STATE U., FULLERTON	SCENIC DESIGNER: DESTINY MANEWAL	FILE NAME: MIDSUMMER FINALS.VMX
			VENUE: YOUNG THEATRE	DIRECTOR: TOMMY STATLER	DRAWN BY: DESTINY MANEWAL
			TECHNICAL DIRECTOR: HAROLD KAST	SCALE: 1/8" = 1'-0"	DATE: 11/29/21



- NOTES:**
- DARK PURPLE BASE TONE
 - GRAY AND PURPLE TONED STONE PATHWAY TO TREE ENTRANCE
 - GREEN TOP TREATMENT, REMINISCENT OF GRASS
 - WHITE DOTS WITH GLOW-IN-THE-DARK PAINT ON TOP
 - FLAT SEALER?

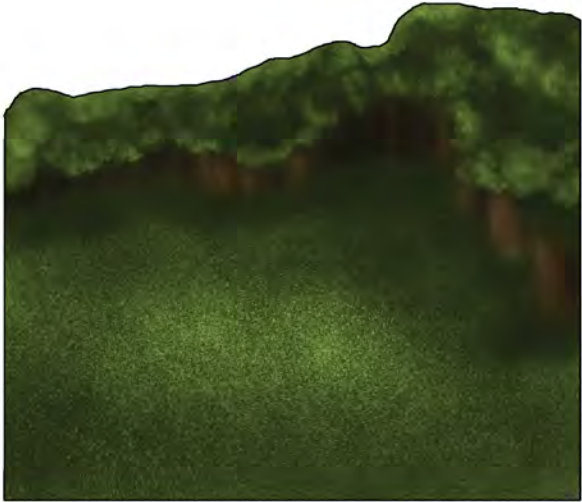
SHEET: 15 OF 19	REVISED: 2/2/22	 A MIDSUMMER NIGHT'S DREAM	SHEET TITLE: FLOOR PAINT ELEV. APPROVED BY:	PRODUCER: CAL. STATE U., FULLERTON	SCENIC DESIGNER: DESTINY MANEVAL	FILE NAME: MIDSUMMER FINALS.vwx
				VENUE: YOUNG THEATRE	DIRECTOR: TOMMY STATLER	DRAWN BY: DESTINY MANEVAL
				TECHNICAL DIRECTOR: HAROLD KAST	SCALE: 1/8" = 1'-0"	DATE: 11/29/21



NOTES:

- CUT DROP AND PLATFORM FACING PAINTING LINE UP AS MUCH AS POSSIBLE

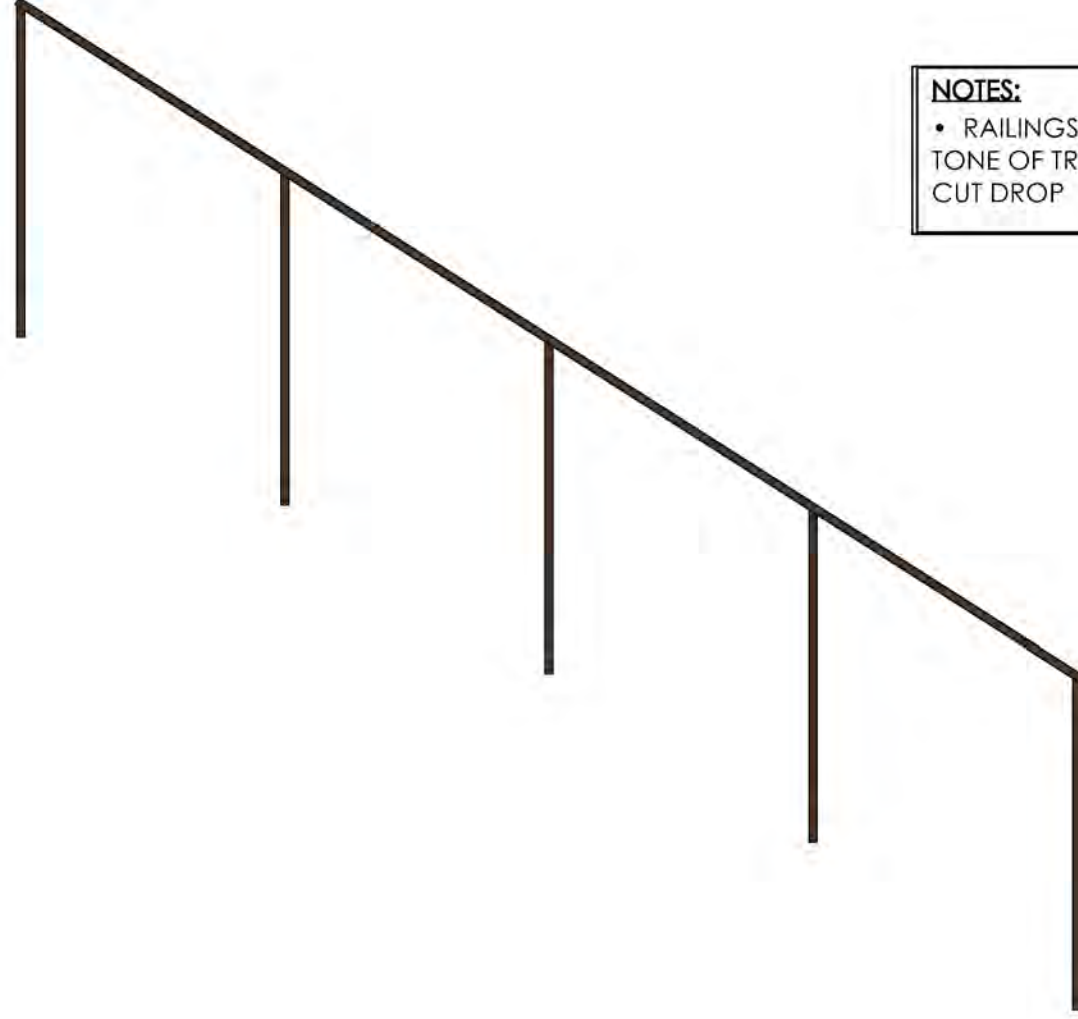
SHEET: <div>16</div> OF 19	REVISED: 2/2/22	<div><div>A</div><div>MIDSUMMER</div><div>NIGHT'S DREAM</div></div>		SHEET TITLE: TREE FACING AND DROP PAINT ELEV. APPROVED BY:		PRODUCER: CAL STATE U., FULLERTON VENUE: YOUNG THEATRE TECHNICAL DIRECTOR: HAROLD KAST		SCENIC DESIGNER: DESTINY MANEWAL	FILE NAME: MIDSUMMER FINALS.vwx
						DIRECTOR: TOMMY STATLER	DRAWN BY: DESTINY MANEWAL	DATE: 11/29/21	



NOTES:

- GROUND ROWS SHOW GRASSY AREA WITH A CONTINUATION OF THE FOREST BEHIND IT

SHEET: <div>17</div> OF 19	REVISED: 2/2/22	<div>A MIDSUMMER NIGHT'S DREAM</div>	SHEET TITLE: GROUND ROWS PAINT ELEV.		PRODUCER: CAL STATE U., FULLERTON	SCENIC DESIGNER: DESTINY MANEVAL	FILE NAME: MIDSUMMER FINALS.vwx
			APPROVED BY:		VENUE: YOUNG THEATRE	DIRECTOR: TOMMY STATLER	DRAWN BY: DESTINY MANEVAL
					TECHNICAL DIRECTOR: HAROLD KAST	SCALE: 1/8" = 1'-0"	DATE: 11/29/21



- RAILINGS MATCH WOOD TONE OF TREE FACING AND CUT DROP

NOTES:

- BUILDING PAINTED ON SIX DROP PANELS
- GRAY TONES FOR DOOR FRAME AND WINDOWS
- WHITE TEXTURE ON REST OF BUILDING, MOSTLY RAW MUSLIN
- GRAY FOR LINEWORK
- BUILDING LINES UP TOGETHER WHEN PANELS ARE HUNG DIRECTLY NEXT TO EACH OTHER